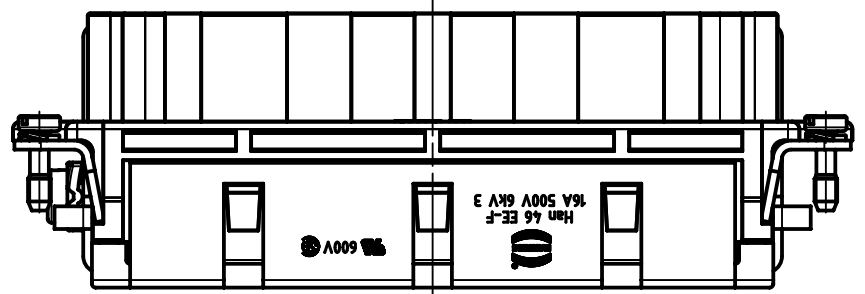
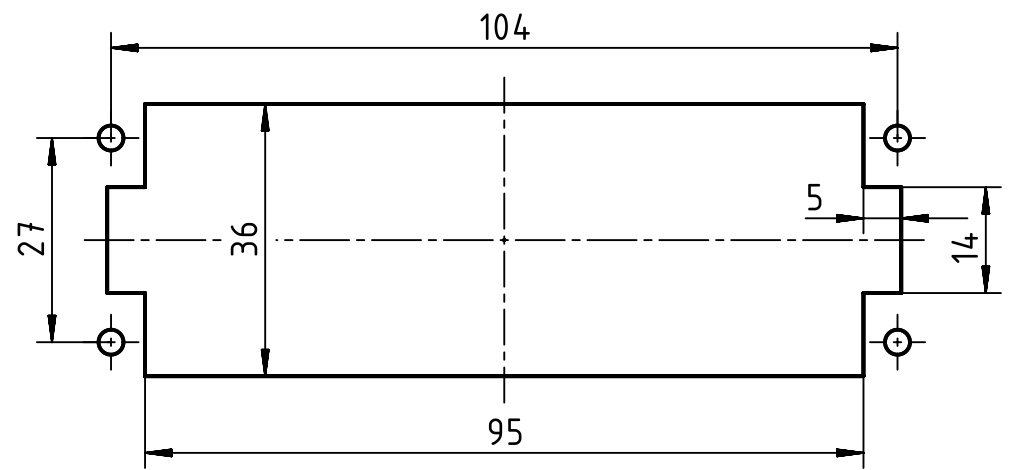


A

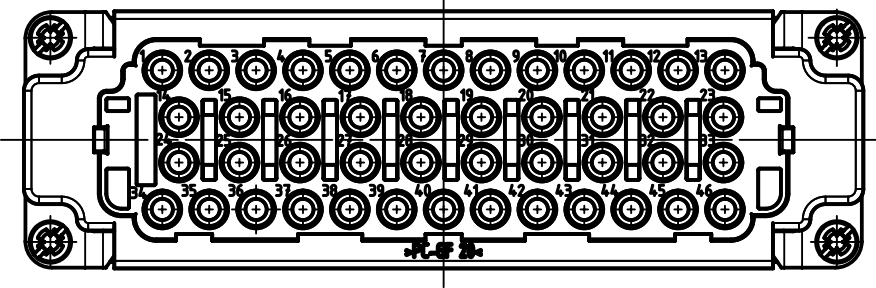
B



panel cut out



C



D

|   |  |   |                          |                          |                             |  |                        |
|---|--|---|--------------------------|--------------------------|-----------------------------|--|------------------------|
|   | All Dimensions in mm<br>Original Size DIN A4 |   | Scale<br>1:1             | Free size tol.           |                             | Ref.   |                        |
|   | All rights reserved<br>Department EL PD - DE |   | Created by<br>MATAU      | Inspected by<br>PRIESTER | Standardisation<br>TIEMANNA | Date<br>2016-09-23                                       | State<br>Final Release |
| HARTING Electric GmbH & Co. KG<br>D-32339 Espelkamp |  | Title<br>Han EE 46 Pos. Female Crimp Insert |                          |                          |                             | Doc-Key / ECM-Nr.<br>100129868/UGD/012/B<br>500000098281 |                        |
|   |  | Type<br>TB                                  | Number<br>09 32 046 3101 |                          |                             | Rev.<br>B  | Page<br>1/1            |