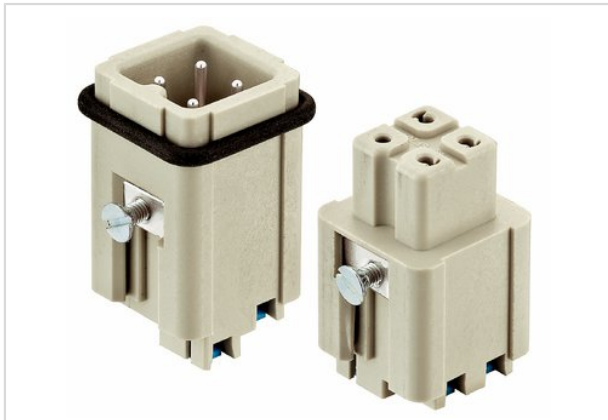


Han 3A male insert with Quick-Lock



| | |
|--------------------|---|
| Part number | 09 20 003 2633 |
| Specification | Han 3A male insert with Quick-Lock |
| HARTING eCatalogue | https://b2b.harting.com/09200032633 |

Identification

| | |
|----------|---------|
| Category | Inserts |
| Series | Han A® |

Version

| | |
|--------------------|-----------------------------|
| Termination method | Han-Quick Lock® termination |
| Gender | Male |
| Size | 3 A |
| Number of contacts | 3 |
| PE contact | Yes |
| Details | Blue slide |

Technical characteristics

| | |
|-----------------------------------|-----------------------------|
| Conductor cross-section | 0.5 ... 2.5 mm ² |
| Electrical data acc. to IEC 61984 | 10 A 230/400 V 4 kV 3 |
| Rated current | 10 A |
| Rated voltage conductor-earth | 230 V |
| Rated voltage conductor-conductor | 400 V |
| Rated impulse voltage | 4 kV |
| Pollution degree | 3 |
| Alternative electrical data | 10 A 250 V 4 kV 3 |
| Rated voltage acc. to UL | 600 V |
| Insulation resistance | ≥10 ¹⁰ Ω |
| Limiting temperature | -40 ... +125 °C |
| Mating cycles | ≥500 |

Material properties

| | |
|-------------------|------------------------|
| Material (insert) | Polycarbonate |
| Colour (insert) | RAL 7032 (pebble grey) |



Pushing Performance

Material properties

| | |
|---|--|
| Material (contacts) | Copper alloy |
| Surface (contacts) | Silver plated |
| Material flammability class acc. to UL 94 | V-0 |
| RoHS | compliant with exemption |
| RoHS exemptions | 6c: Copper alloy containing up to 4 % lead by weight |
| ELV status | compliant with exemption |
| China RoHS | 50 |
| REACH Annex XVII substances | No |
| REACH ANNEX XIV substances | No |
| REACH SVHC substances | Yes |
| REACH SVHC substances | Lead |

Specifications and approvals

| | |
|----------------|--|
| Specifications | EN 60664-1 IEC 61984 |
| Approvals | DNV GL |
| UL / CSA | UL 1977 ECBT2.E235076 CSA-C22.2 No. 182.3 ECBT8.E235076 |

Commercial data

| | |
|-----------------------|----------|
| Packaging size | 10 |
| Net weight | 15.26 g |
| Country of origin | Germany |
| Customs tariff number | 85366990 |