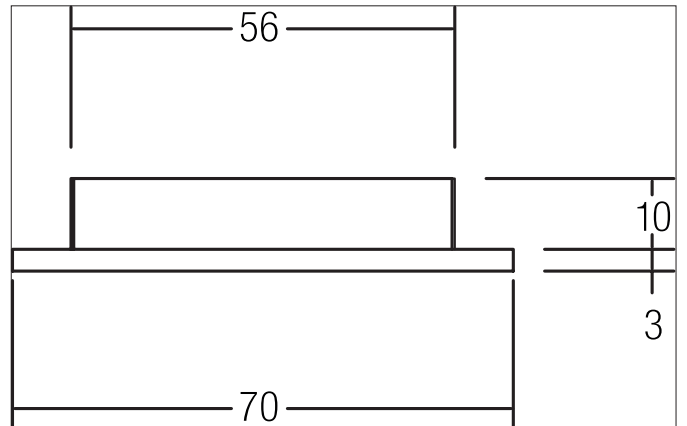
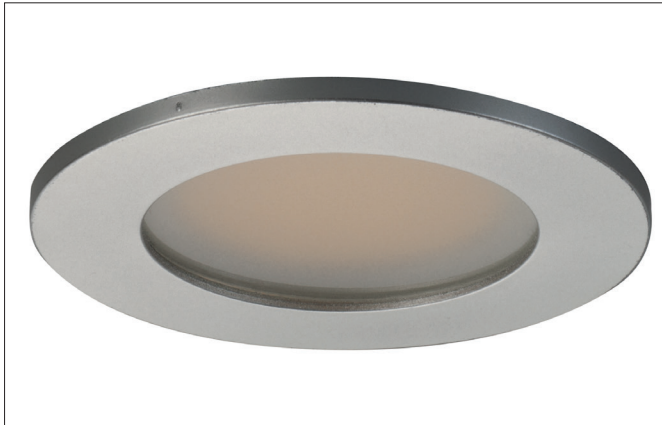




RHINY LED recessed downlight

Article no. 12093263



Tender

LED recessed downlight, Round. Toolless ceiling installation by leaf spring. Ceiling cut-out Ø 56 mm, Installation depth 10 mm, Outer diameter 70 mm, Weight 0,06 kg, with rotationssymmetrical, deep, wide distributed light intensity. Cover plastic, satinised Luminous flux 275 lm, Power 1 x 3,5 W, Light colour warm white, Correlated color temprature (CCT) 3.200 K, Colour rendering index CRI 81, Housing material: Cast iron / Plastic, Colour: aluminum matt, Permissible ambient temperature (ta): -20 °C up to +25 °C, Protection class (EN 61140): III, Degree of protection (DIN EN 60529): IP20. For connection to an external driver, which is not included in the scope of delivery of the luminaire. Depending on driver dimmable.

Product Benefits

- Round recessed downlight made of solid aluminum with polycarbonate cover.
- Protection class IP65 (for installation in closed ceilings).
- Simple and tool-free installation.
- CRI > 90.
- Low installation depth 35 mm, diameter 80 mm, Ceiling cut-out 68 mm.
- Maximum ceiling thickness 20 mm.
- Three surface finishes available.
- With integrated converter (DOB) for connection to 230 V mains voltage.
- Supplied with connection box for quick connection.
- Phase section dimmable.
- dim2warm version (3,000 K - 1,800 K): if the luminaire is dimmed dimmed, the color temperature is reduced.
- Also available in static 3,000 K.

**RHINY LED recessed downlight**

Article no. 12093263

Article data	
Article no.	12093263
GTIN	4250047782667
Series name	RHINY
Short description	LED recessed downlight
Material	Cast iron / Plastic
Colour	aluminum matt
Type of surface	Matt
Shape	Round
Outer diameter	70 mm
Built-in diameter min.	56 mm
Built-in diameter max.	56 mm
Installation depth	10 mm
Hight	3 mm
Scope of delivery	Including 2,000 mm connecting cable
Weight	0.06 kg
D licence plate	No
Conformance	CE, UKCA

Lighting technology	
Colour temperature	3.200 K
Light colour	white
Light output	Direct
Luminous flux	275 lm
System efficiency	79 lm/W
Colour rendering	CRI 81
Reflector	Without
Beam angle	120°
Light sharing	Symmetric
Adjustable color temperature	No

Operating technology of the luminaire	
System output	3.5 W
Voltage type	DC
DC nominal voltage max	12 V
Lamp	LED
Protection class	III
Degree of protection	IP20
Dimmable	Depending on type of control gear
Control	Depending on driver
Bulb change possible	The light source of this luminaire may only be replaced by the manufacturer or a service technician commissioned by him or a similarly qualified person.
Energy efficiency class	not required

Mounting technology	
Mounting method	Recessed mounting
Place of installation	Ceiling-mounted
Adjustability	Not adjustable
Further references	No cover with thermal insulation material
Material cover	Plastic, satinised

**RHINY LED recessed downlight**

Article no. 12093263

Packing data	
Gross weight	0.081 kg
Length of packaging	70 mm
Packaging width	47 mm
Packaging height	81 mm
Disposal at end of life	This product must not be disposed of with household waste. You are obliged, to dispose of such electrical waste separately. By disposing of electrical waste and other old or defective electronics separately, you support recycling or other forms of re-use. In that way you help to take care and to avoid that harmful substances get into the environment.

Required accessories	
Article no.: 17106000 LED power supply 12 V DC, on/off switchable Power: 1 - 15 W Dimensions: 105 mm x 49 mm x 18 mm https://www.brumberg.com/fileadmin/products/Datenblatt_17106000_2021_DE.pdf	
Article no.: 17110000 LED power supply 12 V DC, on/off switchable Power: 1 - 30 W Dimensions: 185 mm x 48 mm x 20 mm https://www.brumberg.com/fileadmin/products/Datenblatt_17110000_2021_DE.pdf	

Optional accessories	
Article no.: 17107000 6-way distributor 12 V DC for 17106/17110 Leistung: 30 W https://www.brumberg.com/fileadmin/products/Datenblatt_17107000_2021_DE.pdf	
Article no.: 17108000 Extension cable 12 V DC for 17106/17110/17107 https://www.brumberg.com/fileadmin/products/Datenblatt_17108000_2021_DE.pdf	